

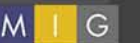


# Texas A&M San Antonio Area Regional Center Planning Team Meeting #9

Wednesday, November 6, 2019

Texas A&M San Antonio Campus, Building 108B

12:00 PM – 2:30 PM



Auxiliary Marketing Services  
Bowtie  
Cambridge Systematics, Inc.  
Economic & Planning Systems, Inc.  
Mosaic Planning and Development Services  
Ximenes & Associates



**SA**



**TOMORROW**

Welcome and Introductions

# Texas A&M San Antonio Area Project Team

- Carlos Guerra, Project Manager  
City of San Antonio
- Jay Renkens, Principal  
MIG, Inc.
- Krystin Ramirez, Senior Project Associate  
MIG, Inc.



# Meeting Agenda

- Welcome and Introductions
- Process Update
- Complete Neighborhoods – Amenities and Public Space
  - Large Group Discussion and Mapping Activity
- Focus Area Vision Recap
  - Small Group Mapping Activity
- Wrap-up and Next Steps



**SA**



**TOMORROW**

Project Process and Schedule

# Sub-Area Planning Project Phases

1

## Analysis & Visioning

Existing conditions; existing plans review; vision and goals; focus areas and corridors; Community Meeting #1

Early 2019

2

## Plan Framework

Develop plan elements; focus areas and key corridors; transformative projects; Community Meeting #2

Mid 2019-Early  
2020

3

## Recommendations & Implementation

Action and phasing strategies; draft Plan elements; Community Meeting #3

Late 2019-Early  
2020

4

## Documentation & Adoption

Public Hearings, adoption, final summary and ePlan

Early-Mid 2020

# Overall of Planning Team Meetings

- ✓ **Meeting #1:** Kick-Off and Orientation; Sub-Area Plan Overview
- ✓ **Meeting #2:** Preliminary Identification of Opportunities of Challenges; Preliminary Visioning
- ✓ **Meeting #3:** Confirm Vision and Goals; Focus Areas and Corridors
- ✓ **Meeting #4:** Housing and Job Projections; Land Use (1 of 2)
- ✓ **Meeting #5:** Land Use (2 of 2)
- ✓ **Meeting #6:** Housing and Economic Development Strategies (1 of 2)
- ✓ **Meeting #7:** Housing and Economic Development Strategies (2 of 2)
- ✓ **Meeting #8:** Mobility
- ➔ **Meeting #9:** Amenities and Public Space
  - **Meeting #10:** Mobility (2 of 2)
  - **Meeting #11:** Transformative Projects; Design Character

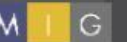


**SA**



**TOMORROW**

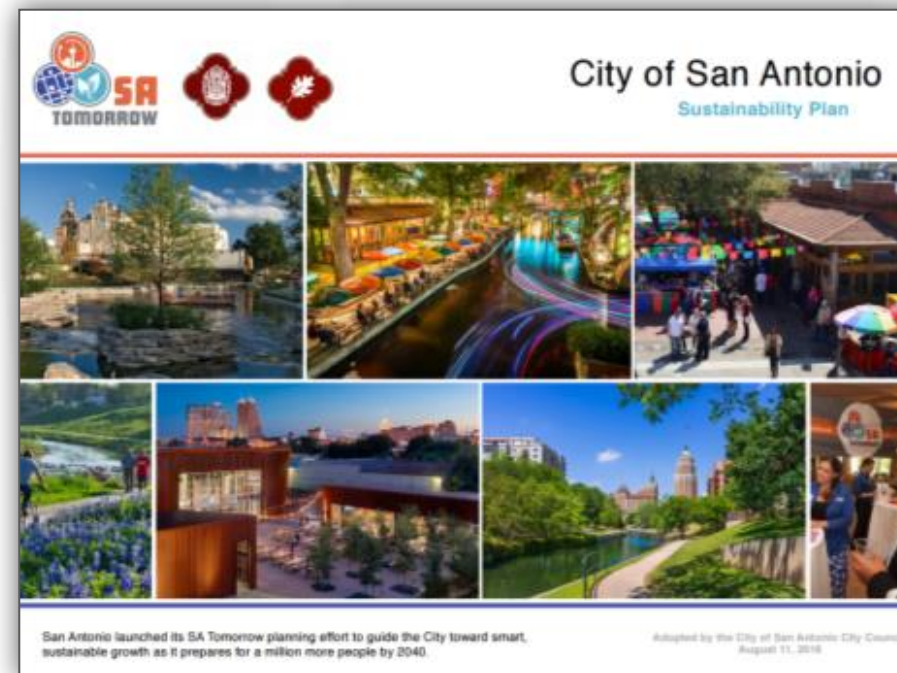
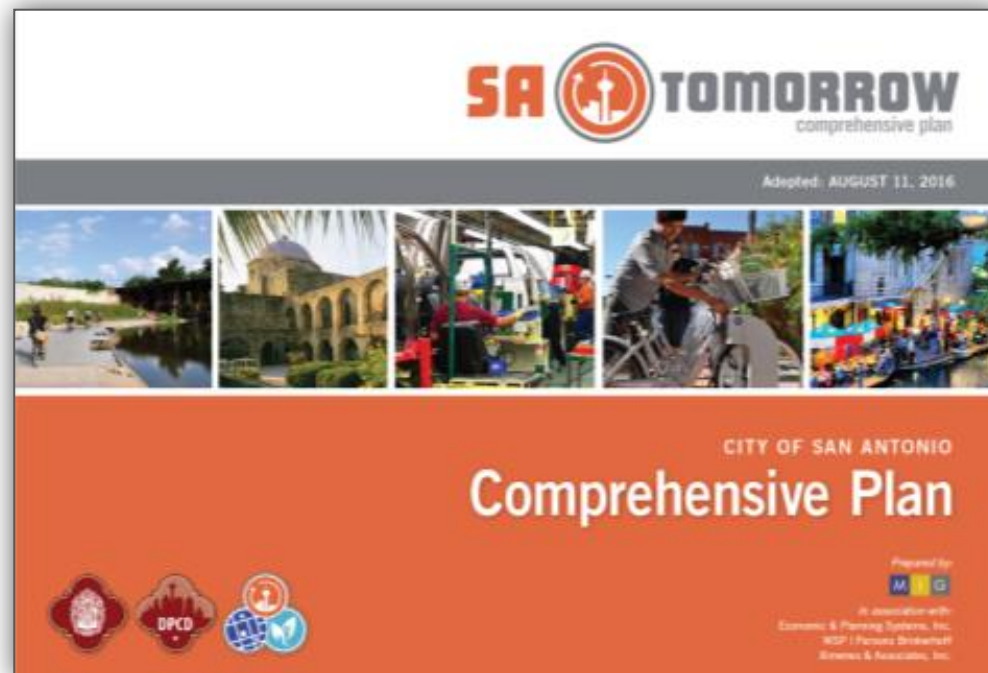
Complete Neighborhoods –  
Amenities and Public Space





# SA Tomorrow: 3 Plans

- Comprehensive Plan, Multimodal Transportation Plan and Sustainability Plan
- Working along with Sub-Area Plans to promote **Complete Neighborhoods**







# SA Tomorrow is the story of a great American city.

San Antonio is a **dynamic city with neighborhoods** that are complete with **unique places** that define their **character** and **celebrate our history**. Our corridors **unite our residents** and our businesses, using **cutting-edge multimodal options** that **connect our neighborhoods** to vibrant regional destinations. Our infrastructure supports a **healthy and safe** lifestyle while making **San Antonio an efficient, resilient city**. Our economy is the envy of the country, with a **thriving and ever expanding business sector**. San Antonio maintains an elite status in the country, **supporting the military missions** that keep our country safe while supporting the vast number of **military personnel** that call San Antonio **home**. We **nurture our future**, with a **thriving natural environment** as well as **quality education** and opportunities for all children...they will inherit **a truly great and sustainable city**.

San Antonio is a **diverse and thriving** community, with a local government that's **accountable, innovative and responsive**.

**This is the story of a great American city...SA Tomorrow.**



## Guiding Principles

The following principles establish a higher-order decision-making framework to guide the growth and evolution of the City of San Antonio for the next 25 years. The guiding principles were developed throughout the Comprehensive Plan process to support the vision and set clear priorities for plan development. The guiding principles articulate the overarching direction for the plan recommendations while also framing a set of criteria for evaluating unanticipated opportunities and potential deviations from the specific direction set in this document. The seven guiding principles include:

**1** Maintain the character and integrity of existing San Antonio neighborhoods, parks, open space and trails by focusing growth in mixed-use regional centers and along attractive multimodal corridors with high performing transit service.



**2** Ensure that all residents living in existing and new neighborhoods have safe and convenient access to jobs, housing, and a variety of amenities and basic services including great parks, strong schools, convenient shopping and nearby regional centers.

**3** Connect safe and stable mixed-income neighborhoods with a system of walkable and bikeable streets, trails and pathways that celebrate and link natural greenways and drainage ways.

# SA Tomorrow Plan Elements

- 9 Plan Elements to help guide Citywide Goals, Policies and Strategies for Implementation



Community  
Health & Wellness



Growth & City  
Form



Historic  
Preservation



Housing



Jobs & Economic  
Competitiveness



Military



Natural Resources



Public Facilities &  
Community Safety



Transportation &  
Connectivity



# SA Tomorrow Plan Elements

- 3 Plan Elements that are focused on within the Amenities & Public Space section of the Plan



**Community  
Health & Wellness**



Growth & City  
Form



Historic  
Preservation



Housing



Jobs & Economic  
Competitiveness



Military



**Natural Resources**



**Public Facilities &  
Community Safety**



Transportation &  
Connectivity

# What makes Complete Neighborhoods?

- **Built Form, Land Use & Urban Design**
  - Define the character of a place
- **Mobility & Access**
  - Provide connections to and from places within the City
- **Amenities & Public Space**
  - Tangibles and intangibles that contribute to and define the Quality of Life of places within the City

What is an *amenity*?

# What is an *amenity*?

- Amenities are *public*
  - Features that enhance the quality of life of residents
- Amenities enhance the comfort, enjoyment, or convenience of a public place for gathering in or spending time with other community members



# Types of Amenities and Public Spaces

- Parks/Plazas
- Trails/Trailheads
- Social Gathering and Community Event Spaces
  - Community Centers/Rec Centers/Senior Centers
  - Schools and Colleges
  - Libraries
  - Community Gardens
  - Neighborhood Main Streets
- Public Art

# Amenities and Public Space

- Parks/Plazas



# Amenities and Public Space

- Trails/Trailheads





# Amenities and Public Space

- Social Gathering and Community Events Space





# Amenities and Public Space

- Social Gathering and Community Events Space –  
Community Gardens





# Amenities and Public Space

- Public Art





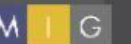


**SA**



**TOMORROW**

Large Group Discussion  
& Mapping Exercise:  
Amenities and Public Space



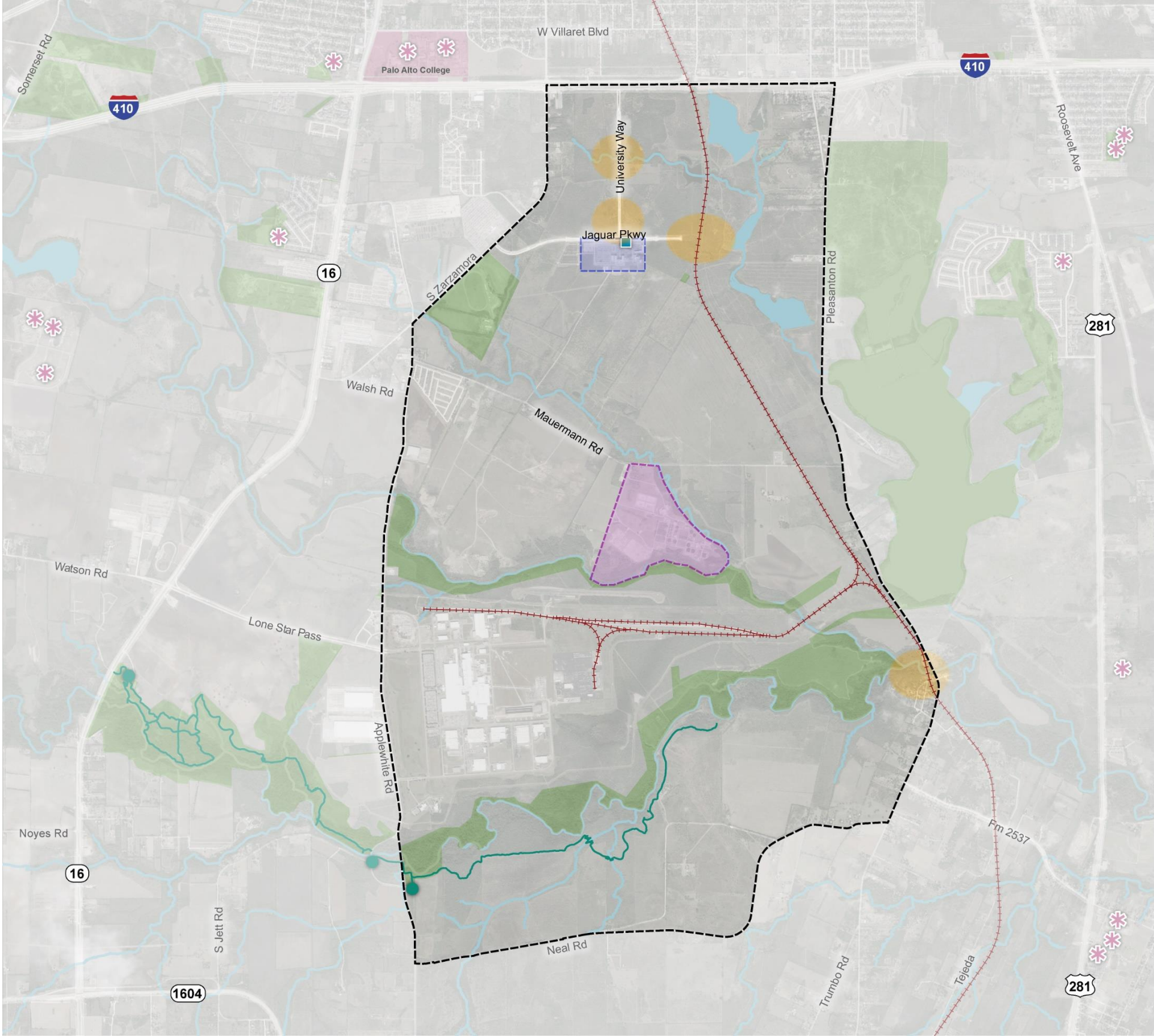
Which of these (or other) elements are the most critical to creating Complete Neighborhoods in the Texas A&M - San Antonio Plan Area?

Where do some of these exist, but need reinvestment?

- Parks/Plazas
- Trails/Trailheads
- Public Art
- Social Gathering and Community Event Spaces
  - Community Centers/Rec Centers/Senior Centers
  - Schools and Colleges
  - Libraries
  - Community Gardens
  - Neighborhood Main Streets



Texas A&M -  
San Antonio  
- DRAFT  
Amenities &  
Public  
Space Map



Texas A&M - San Antonio Area  
REGIONAL CENTER

AMENITIES AND  
PUBLIC SPACE

- Regional Center Area Boundary
- Adjacent Regional Center or Community Area
- Park or Open Space
- Plaza
- Focus Area
- Mixed-Use Corridor
- Stream
- Trails
- Trailhead
- Social Gathering and Community Event Space (Inside of Study Area)
- Social Gathering and Community Event Space (Outside of Study Area)
- Public Art
- City Owned Properties
- Bus Stop



# SA TOMORROW

Focus Area Vision Recap  
& Small Group Mapping Activity



# Three Tools for refinement and additional specificity in the Focus Areas

1. Application of SA Tomorrow Place Types
2. Mapping of specific Urban Design, Amenities and Public Space elements with each Focus Area
3. Annotations on Focus Area maps to be incorporated into Focus Area narrative

# Place Types

## Trails, Parks and Open Space Place Types:

- Trail-Oriented Development
- Community/Regional Park
- Natural/Historic/Cultural Asset
- Green Neighborhood

TRAIL-ORIENTED  
DEVELOPMENT



COMMUNITY/REGIONAL  
PARK



GREEN  
NEIGHBORHOOD





# Place Types

## Adaptive Re-Use Place Types:

- Shopping Mall Retrofit
- Office Park Infill
- Industrial Site Reuse

SHOPPING MALL  
RETROFIT



OFFICE PARK INFILL



INDUSTRIAL SITE  
REUSE





# Place Types

## Multimodal, Mixed-Use Place Types:

- Regional/Commuter Rail
- High Capacity Transit Corridor
- Institutional/Campus Mixed Use
- Community Corridor
- Neighborhood Main Street

INSTITUTIONAL/CAMPUS  
MIXED-USE



COMMUNITY CORRIDOR



NEIGHBORHOOD MAIN  
STREET

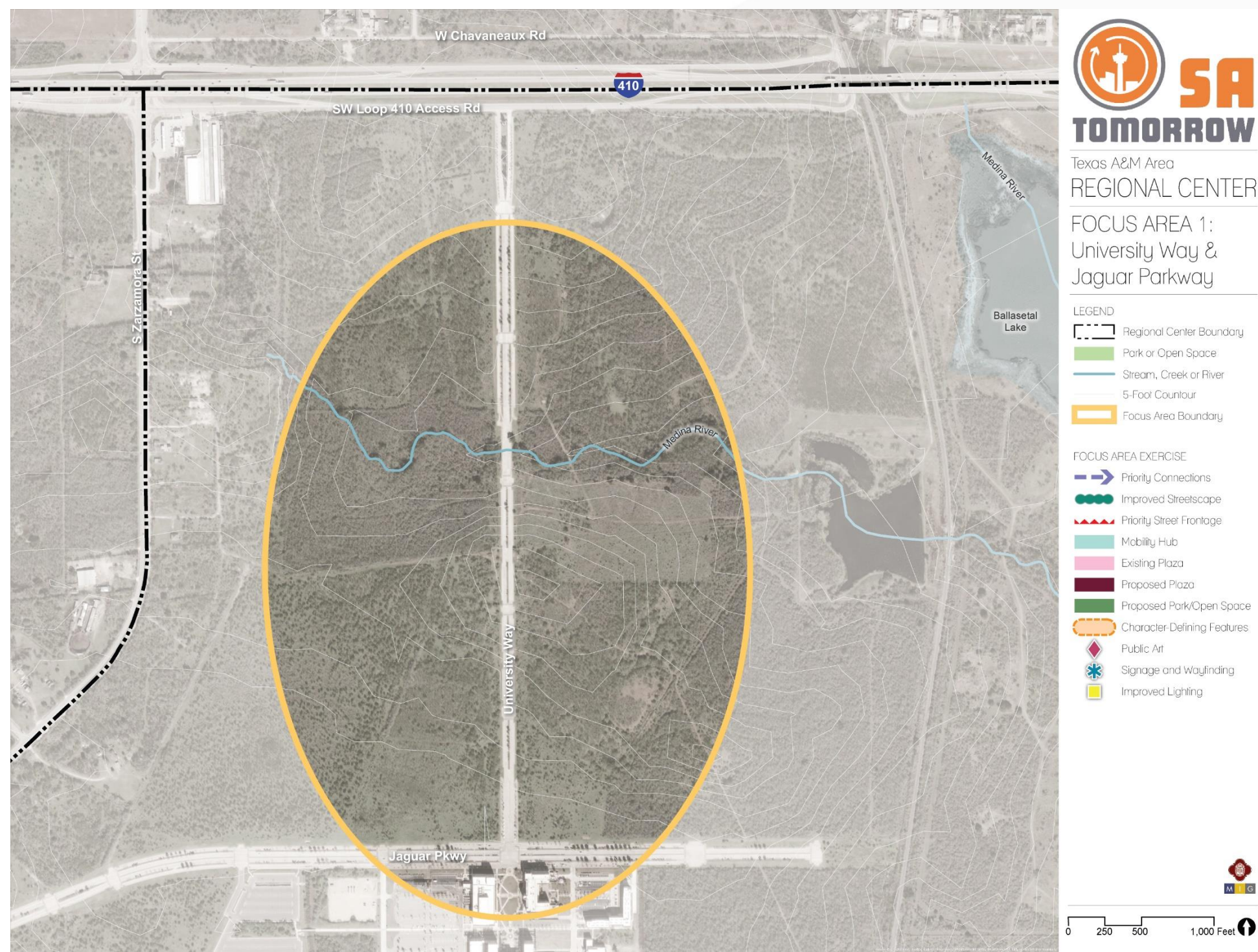


# Urban Design, Amenities & Public Space elements to map for each Focus Area:

- Priority Connections
- Improved Streetscape
- Priority Street Frontage
- Mobility Hub
- Existing Plaza
- Proposed Plaza
- Proposed Park/Open Space
- Public Art
- Signage and Wayfinding
- Improved Lighting



# Focus Area 1: University Way & Jaguar Parkway

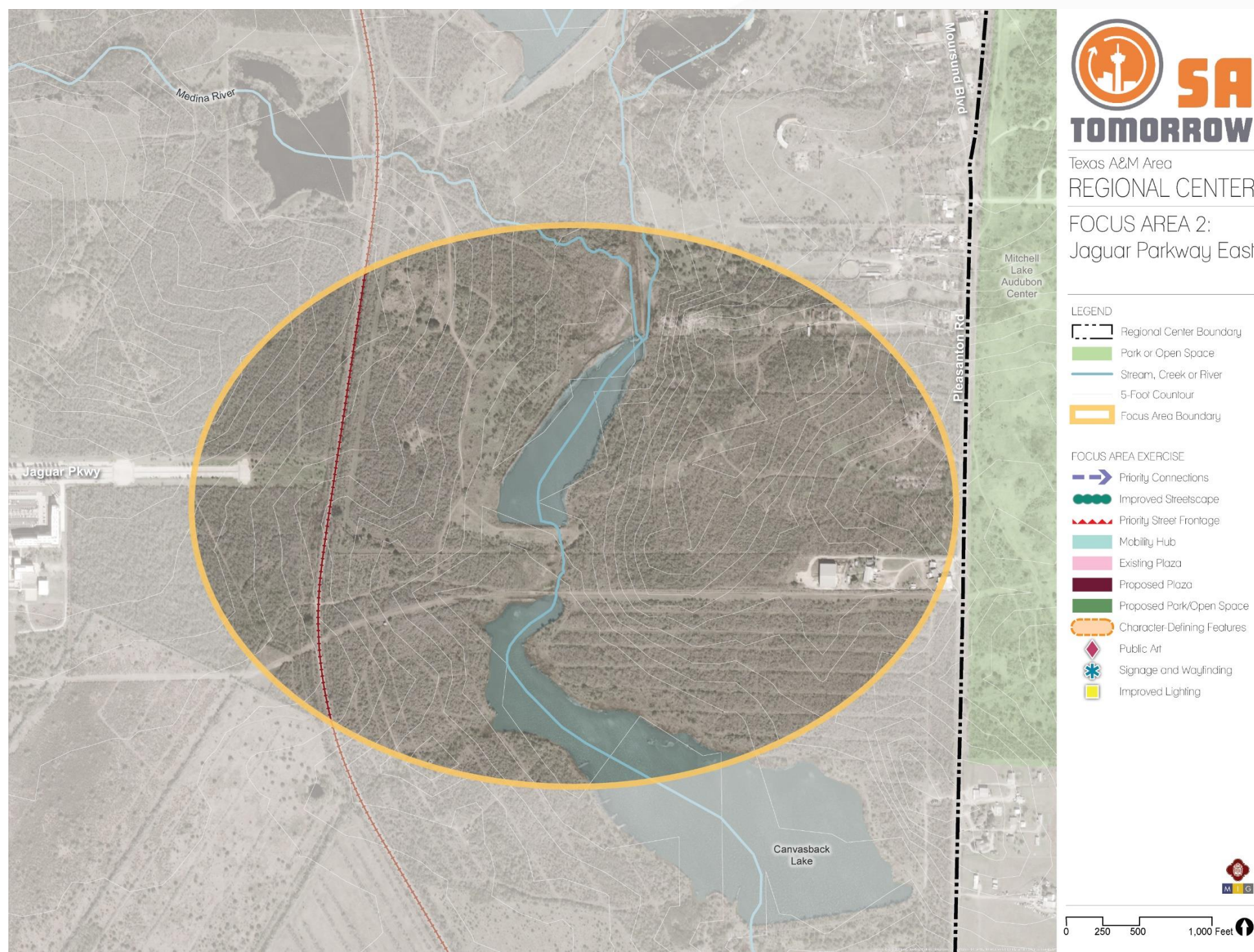




# Focus Area 1: University Way & Jaguar Parkway

- The intersection of Jaguar Parkway and University Way and the vacant property north of campus.
- The most recent plan, Vida! San Antonio, identifies the area as supporting a mix of housing options north of campus and a mixed-use town center immediately north of campus.
- What we have heard from the Community Meeting on March 20:
  - Purpose: Live, Work, Play
  - Character: Safe, Active, Mixed Use, Fun/Lively
  - Public Comment: *“Jaguar and University Way could support a greenway path on both sides; the area has a lot of opportunity and promise to provide much needed amenities for the Southside area residents”*

# Focus Area 2: Jaguar Parkway East



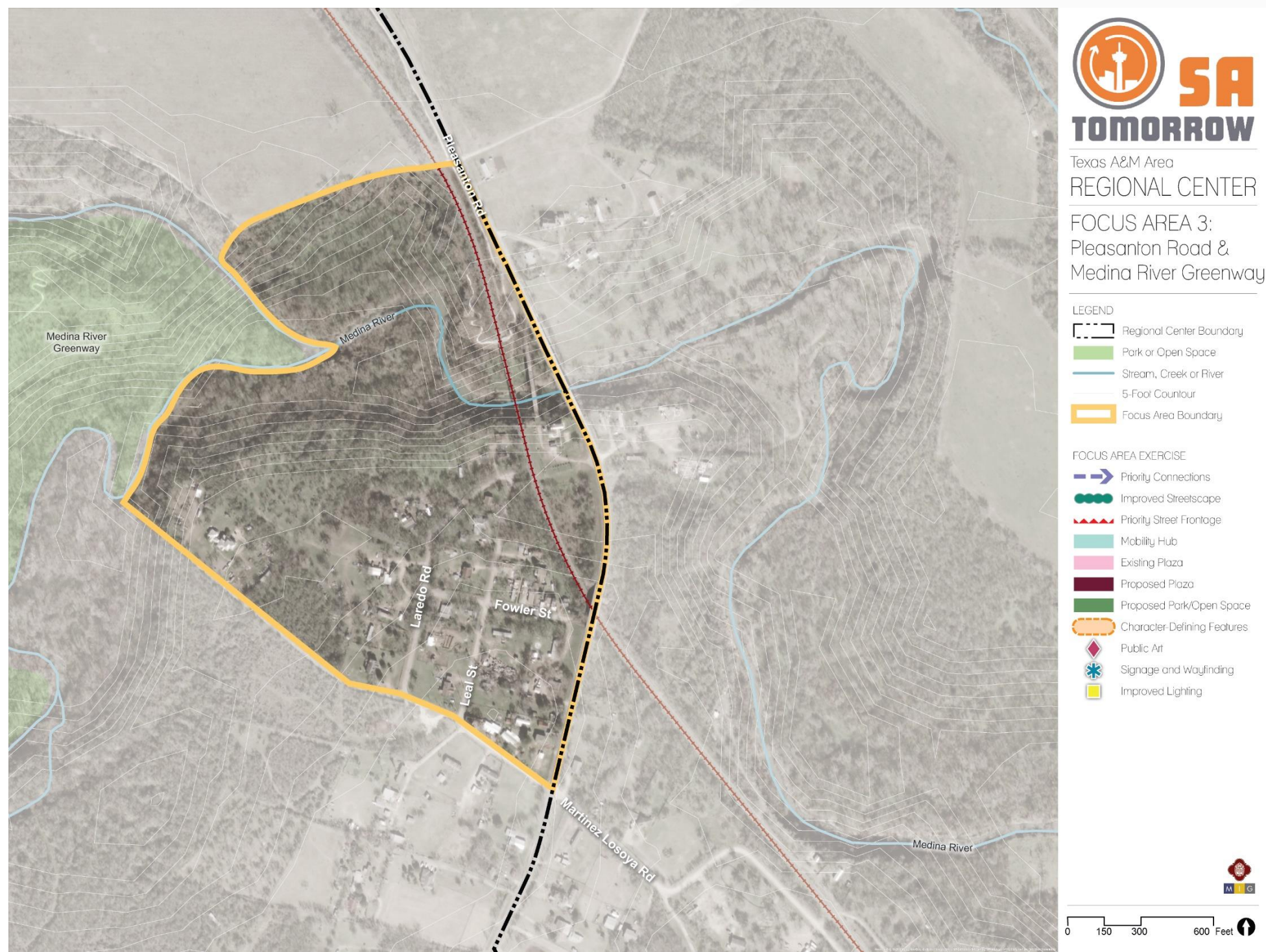


## Focus Area 2: Jaguar Parkway East

- The area is located on the East end of Jaguar Parkway.
- VIA's Metropolitan Transit's Vision 2040 Long Range Plan identifies a final stop on the planned Zarzamora Corridor that will connect the Texas A&M-SA area to South Park Mall, numerous Southside and Westside communities, and other planned rapid transit routes serving employment centers such as Downtown and the Medical Center.
- Extending Jaguar Parkway can be a challenge, due to the railroad crossing and floodplain to the East.
- Future projects could provide a safe and comfortable gathering place for transit riders.
  - Purpose: safe-living, comfortable walking (accessible)
  - Character: Safe
  - Public Comment: *"Transit stops should be sheltered"*



# Focus Area 3: Pleasanton Road & Medina River Greenway



## Focus Area 3: Pleasanton Road & Medina River Greenway

- This area is generally where Pleasanton Road intersects the Medina River Greenway Trail near the southern end of Mitchell Lake.
- The nearby area is mostly underdeveloped and lacks amenities that might serve the users of the natural area.
- The area has a small parking lot to the east (outside the plan boundary) and signage to identify the trail.
- There are no places to sit or gather, or unique landscaping features.
- Could support trail-oriented development for the future.



**SA**



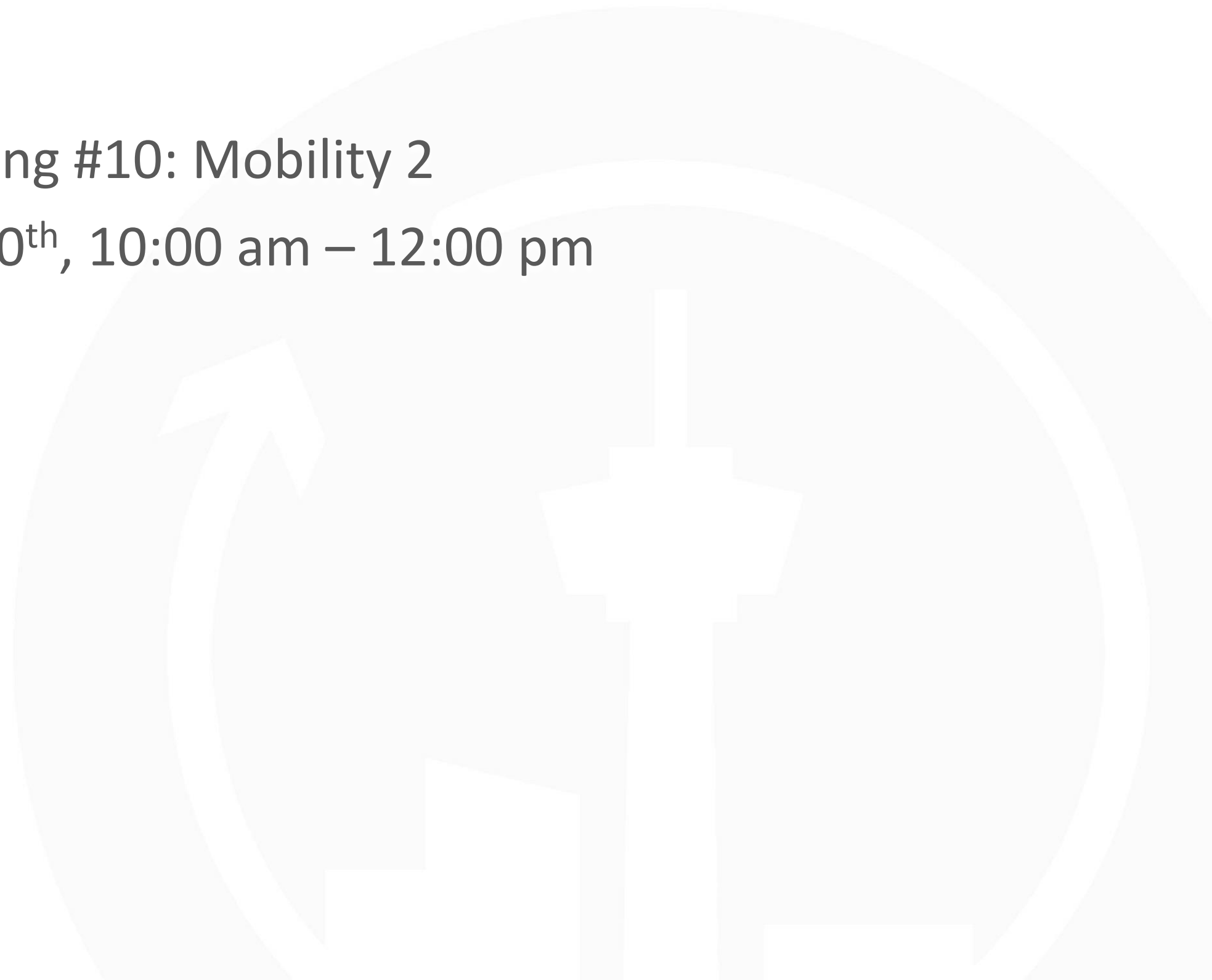
**TOMORROW**

Wrap-up and Next Steps

# Coming Up...

Planning Team Meeting #10: Mobility 2

Tuesday December 10<sup>th</sup>, 10:00 am – 12:00 pm





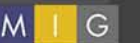


# Texas A&M San Antonio Area Regional Center Planning Team Meeting #9

Wednesday, November 6, 2019

Texas A&M San Antonio Campus, Building 108B

12:00 PM - 2:30 PM



Auxiliary Marketing Services  
Bowtie  
Cambridge Systematics, Inc.  
Economic & Planning Systems, Inc.  
Mosaic Planning and Development Services  
Ximenes & Associates